



**AI**

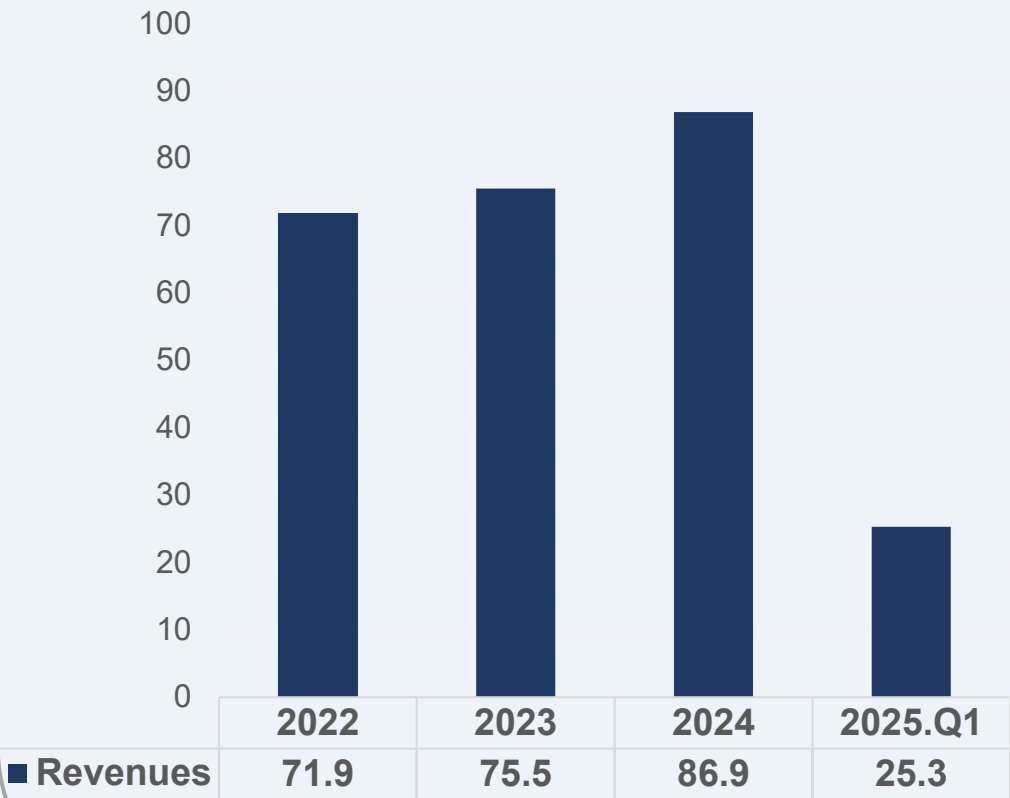
**The Era of Uncertainty**

**-Build Business Resilience with IT**

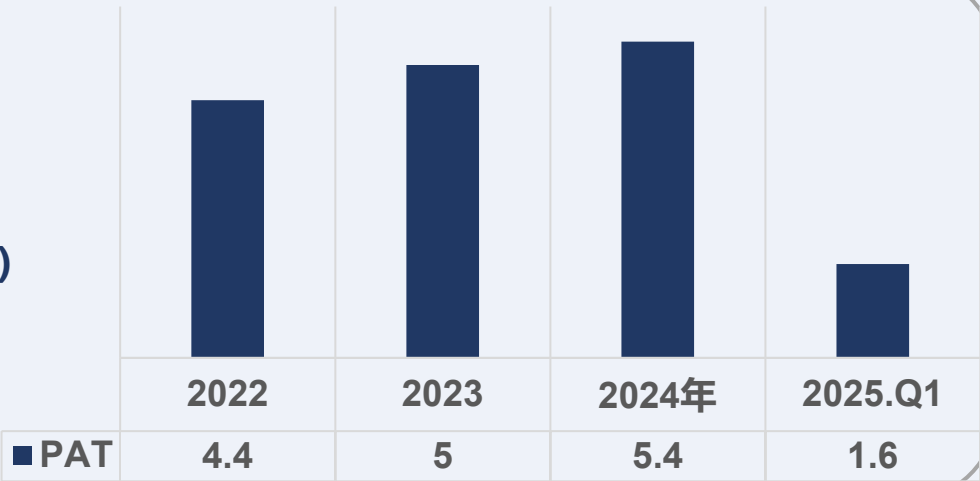
Sandy Chou, 2025/06/24

# Financial – Revenues and EPS

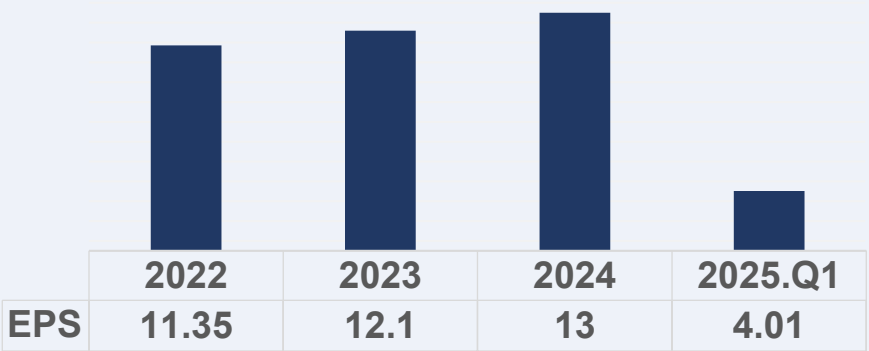
Revenues (100M NTD)



PAT (100M NTD)



EPS(NTD)



# AI Trending- 「AI Ready Enterprises」

## New Trends of AI Development

DeepSeek 後的技術發展

- Tech Focus Shift:
  - Training to Inference (新晶片需求)
- Cloud AI to Edge AI
  - + AI Chipsets, PC, Phone, Apps ... (台灣機會)
- Enterprise AI:
  - + In-house Models (DS, Gemma 3, GPT open weights)
  - + Vertical Models (Harvey)
- Consumer AI:
  - + AI Agents (Deep Research, Computer Use, Manus)
- Embedded AI:
  - 80% software with embedded AI in 2025



### 企業應成為「AI-Ready」組織

面對新的 AI 發展趨勢，企業該如何抓住機會？從員工角度來看，簡立峰表示「請記住，當你要做任何事情，先想 AI 可以幫你做什麼。」他強調，使用 AI 不只是加速，而是解決原來做不到的問題。在他看來，人力不是被取代，而是能力提升。

至於企業層面，簡立峰強調，企業要成為「AI-Ready (AI 就緒)」的組織，企業要先參與、掌握 AI，讓 AI 進入每一個環節，其中智慧客服、數位行銷、程式自動化、知識管理等都是標準應用。他強調，任何組織要變成 AI-First (AI 優先)，將涉及流程改變、文化改變，以及決策改變。

「最後，不管做什麼事，最重要是學會問問題，而問問題，比我們想像中的難還難」，簡立峰表示，使用 AI 的能力仰賴對於 AI 的理解，以及想要達到的目標，這需要整個社會去學習。

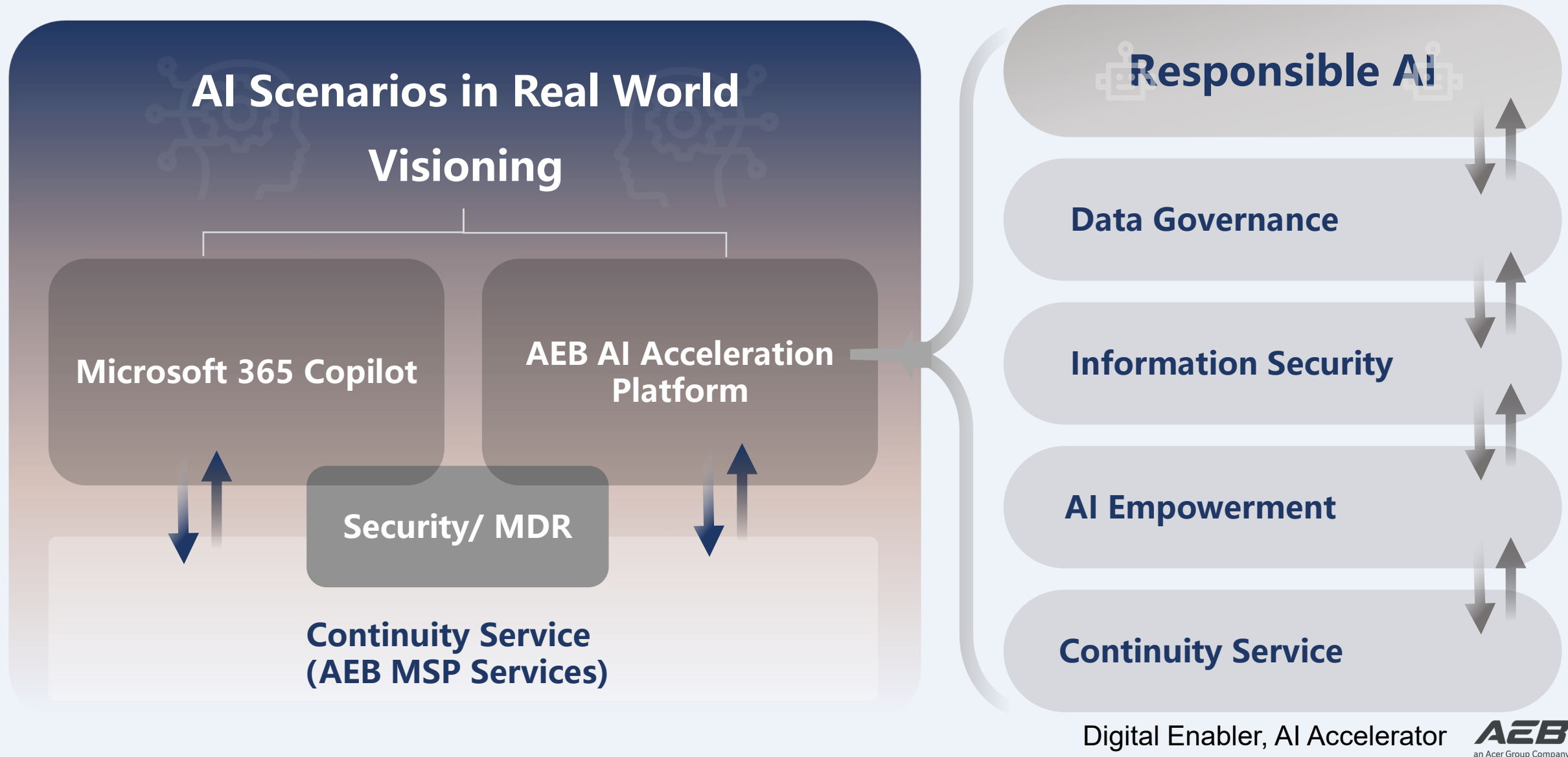
Source: 5/19 Taiwan AI Ready Forum, Lee-Feng Chien/TechOrange

Source: 4/30 Commonwealth Forum, Lee-Feng Chien

Digital Enabler, AI Accelerator

**AEB**  
an Acer Group Company

# AEB AI Customer Journey-Become AI Ready Enterprises



# Business Case #1– Digital Employees

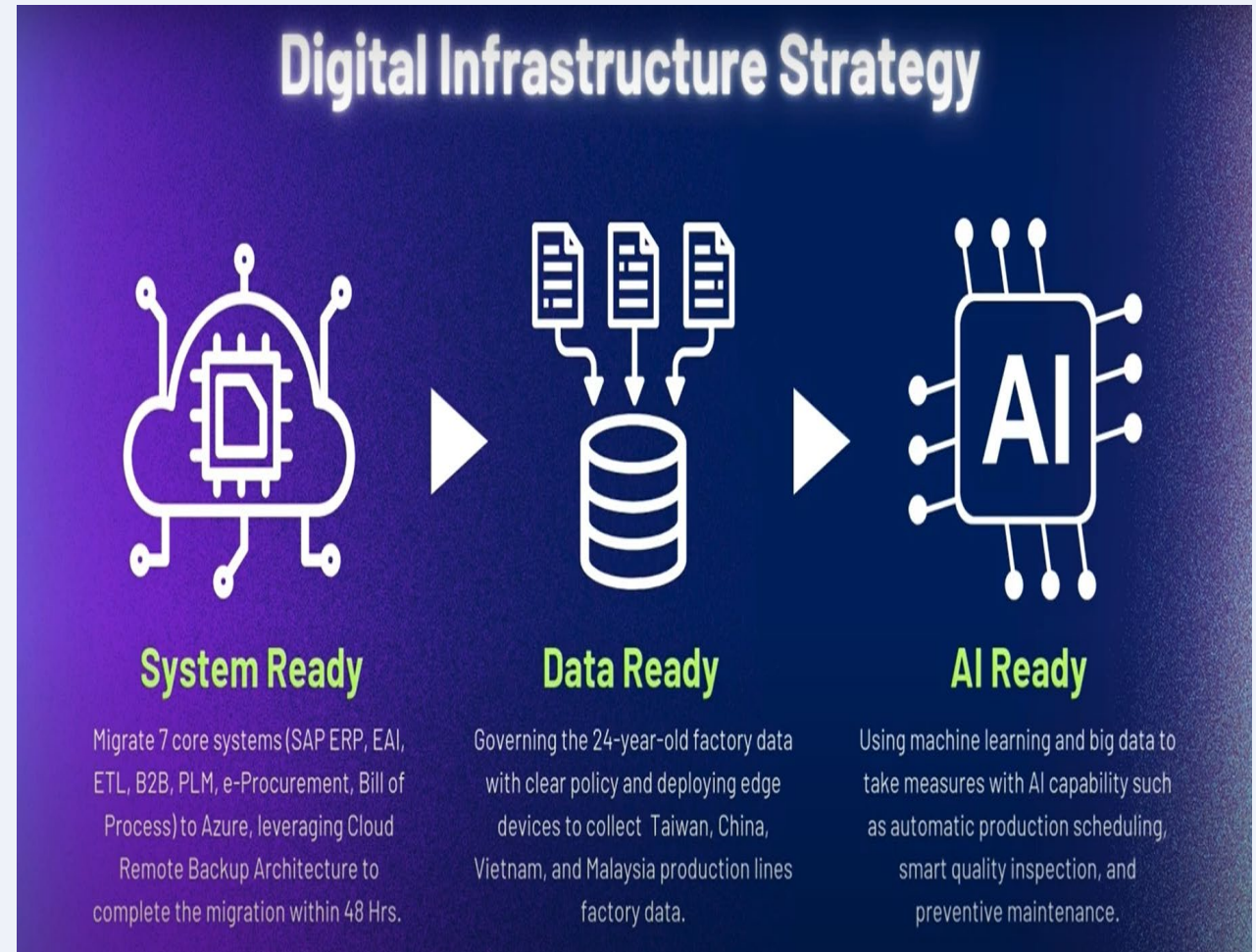
- 10 digital employees working with 50K human employees worldwide, **7X24X365**
- Saving **man-days equivalent of 91 full-time employees** each year
- **Paradigm Shift:**  
**Frontier Firm**= Human Employees + Digital Employees





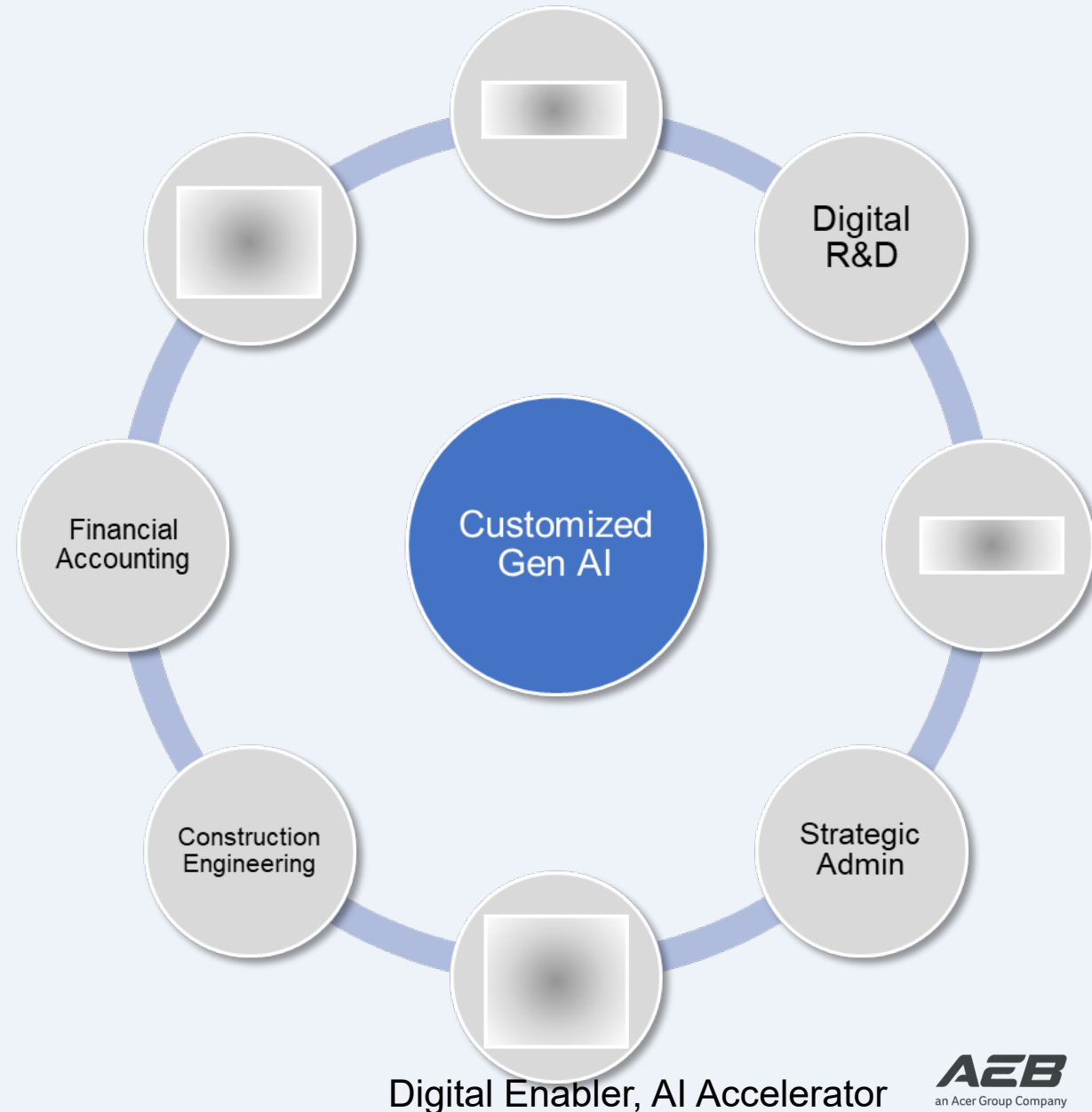
# Business Case #2– AI Ready Manufacturing

- Successfully move **7 core business systems to Public Cloud**, in 48 Hours.
- As a result of increasing overall efficiency, **profit is up 5%** yearly and **customer satisfaction** raised to **95%**.
- AI Ready, high availability global manufacturing



# Business Case #3– Government Resilience

- Customized Gen AI is implemented to the **SOE's 8 core functions and systems**, while general-purpose Gen AI is introduced to serve all employees.
- Document output and inquiry reach **90% accuracy rate**, reducing human labor.
- Re-govern historic data of past 10 years, **build departmental AI knowledge DB**, facilitating **process automation** and increasing efficiency.





# AEB

an Acer Group Company

**Enterprise AI Accelerator**

Align global best practices. Enable business transformation.

***The Best  
is Yet to Come !***